

ROGUE MACHINE PRESENTS THE WORLD PREMIERE OF A NEW MUSICAL

COME GET MAGGIE

BY **DIANE FROLOV**

MUSIC BY **SUSAN JUSTIN**

LYRICS BY **DIANE FROLOV
& SUSAN JUSTIN**





PRESENTS THE WORLD PREMIERE OF A NEW MUSICAL

Come Get Maggie

Book by **Diane Frolov**

Music by **Susan Justin**

Lyrics by **Diane Frolov** and **Susan Justin**

Directed by **Michael Pressman**

Choreography by **Brooke Wendle**

featuring in order of appearance

MELANIE NEILAN*, **MELISSA JOBE***, **BRUCE NOZICK***, **PHILIP CASNOFF***, **DENNIS RENARD***, **CHASE RAMSEY***, **EDDIE VONA***, **JACQUELIN LORRAINE SCHOFIELD***, **BETH EGAN***, **NICOLE LEDOUX**, **SARAH HINRICHSSEN**, **ALAN TRINCA***

MUSIC SUPERVISION, ARRANGEMENTS
AND INCIDENTAL MUSIC

ALBIN KONOPKA

ASSOCIATE DIRECTOR

KRYSTA HIBBARD

SOUND DESIGN

CHRISTOPHER MOSCATTIELLO**

VIDEO DESIGN

NICHOLAS SANTIAGO

GRAPHIC DESIGN

MICHELLE HANZELOVA-BIERBAUER

PRODUCTION STAGE MANAGER

RACHEL ANN MANHEIMER

TECHNICAL CO-DIRECTORS

JOE MCCLEAN & DANE BOWMAN

Produced by **John Perrin Flynn**

MUSIC DIRECTOR

MICHELLE DO

PRODUCTION DESIGN

STEPHANIE KERLEY SCHWARTZ**

LIGHTING DESIGN

RIC ZIMMERMAN

COSTUME DESIGN

DANA REBECCA WOODS**

ASSOCIATE SET DESIGN

PROPERTY DESIGN

GLENN MICHAEL BAKER

ASSOCIATE PRODUCER

REBECCA LARSEN

Rogue Machine would like to thank our corporate sponsors:
The Dick Wolf Company and **NBC/Universal** and **Preston Productions**
Their generous support has helped make this production possible.

**PROGRAM FOR COME GET MAGGIE UNDERWRITTEN
WITH THE GENEROUS SUPPORT OF LEE RAMER**

*Member of Actors' Equity Association, The Union of Professional
Actors and Stage Managers in the United States.

**Member of United Scenic Artists Local USA 829 IATSE

CAST AND CHARACTERS

In order of appearance

MELANIE NEILAN*

YOUNG MAGGIE/GROWN MAGGIE

MELISSA JOBE*

MRS. WYBERRY/LINDA/SHOPPER/ALIEN/ABDUCTEE

BRUCE NOZICK*

MR. WYBERRY/GEN. WINTHROP/SHOPPER/ALIEN/POLICE PHOTOGRAPHER/BEAT COP

PHILIP CASNOFF*

DETECTIVE ZISKIN/DR.FLOYD

DENNIS RENARD*

VAREX/PLANET/STAR/SCIENTIST/SHOPPER/ELVIS PRESLEY/AIR FORCE OFFICER/BEAT COP

CHASE RAMSEY*

HUGH HINKLE/GRADUATE/SCIENTIST/AIR FORCE OFFICER/SECRET SERVICE AGENT/ALIEN

EDDIE VONA*

RODNEY/PLANET/STAR/GRADUATE/SCIENTIST/MINISTER/DONNA/SHOPPER/ALIEN/ABDUCTEE/
AIR FORCE OFFICER/SGT.O'MALLEY/THE PRESIDENT OF THE UNITED STATES

JACQUELIN LORRAINE SCHOFIELD*

AUNTIE RUTHIE/PLANET/STAR/GRADUATE/BEAUTICIAN/PAULA/ABDUCTEE

BETH EGAN*

LITTLE RUTHIE/PLANET/STAR/GRADUATE/BEAUTICIAN/NEIGHBOR/SANDRA/
SHOPPER/ALIEN/ABDUCTEE/JUNIOR OFFICER

NICOLE LEDOUX

KWEE/PLANET/STAR/GRADUATE/BEAUTICIAN/NEIGHBOR/BOBETTE/SHOPPER/
ABDUCTEE/PRESS PHOTOGRAPHER

SARAH HINRICHSEN.....FEMALE SWING

ALAN TRINCA*.....MALE SWING



** Member of Actors' Equity Association, The Union of Professional Actors and Stage Managers in the United States.*

Time:

1930s, 1950s

Place:

Earth, The Space Around Earth

*This performance will run for two hours
with one 15 minute intermission*



ROGUE MACHINE BOARD OF DIRECTORS

Neely Swanson
President/Chair

Stephanie Kerley Schwartz
Secretary

Guillermo Cienfuegos
Ginna Carter
Elina de Santos
John Perrin Flynn

Paula Holt
Perla Karney
Asaad Kelada
John Pollono

Emeritus:
Jean Craig
Lesley Brander-Epps
Lewin Wertheimer

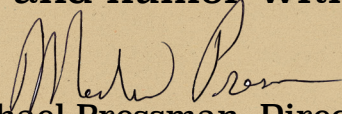
PRODUCTION TEAM

John Perrin Flynn+ *Artistic Director*
Elina de Santos+ *Co-Artistic Director*
Guillermo Cienfuegos *Co-Artistic Director*
Rachel Manheimer *Production Manager*
Stephanie Kerley Schwartz+ *Resident Designer*
Chris Moscatiello *Resident Designer*
John Pollono+ & Roxanne Hart *Rant and Rave Founders*
Stacie Chaiken *Rant & Rave Producer*
Christopher Veluz *Rant & Rave Producer*
Tracie Lockwood+ *Around-the-Clock Producer*
Ramón Valdez *Company Manager*
Judith Borne+ *Publicist*
Scott Sheldon *Office Manager*
+ *Founding Member*

Additional Crew for Come Get Maggie:

Sound Engineer: **Nick DePinto**
Assistant Sound Designer: **Iain Thomas**
Keyboard Programmer: **Marc Macalintal**
Lead Electrician: **Matt Schumacher**
Electricians: **Greg Crafts, Brian Dawson**
Lighting Assistant: **Alexander Freer**
Assistant Stage Manager: **Vanessa Hanish**
Stage Manager: **Rich Wong**
Assistant Costume Design: **Ashley N. Medina**
Costume Assistant: **Teak Piegdon**
Associate Choreographer: **Anna Aimee White**
Recording Engineer: **Matt LaPoint**
Social Media: **Angelea Kelly**

“After the last two years of incredible adversity and isolation, I wanted to work on a joyful piece of musical theater that would share optimism and humor with all ages.”



- Michael Pressman, Director

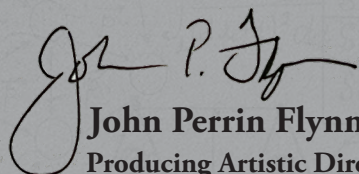
When Michael Pressman approached me about producing *Come Get Maggie*, a world premiere musical, I immediately said no. We don't do musicals. Michael knew that we did do development workshops on plays we might not produce. Michael asked if we'd do a week workshop on *Maggie* with him directing. I am not saying Michael is sly but, here we are, producing our very first musical.

This production owes a lot to the wonderful work of Brooke Wendell, our choreographer, Albin Konopka, our music supervisor and arranger, and Krysta Hibbard, Michael's associate director.

A musical is the work of many hands. Several people have worked above and beyond the call of duty. This stuff is hard. So, thanks to the extraordinary design team and the equally extraordinary production team. You rose to a considerable challenge.

There were a lot of factors in choosing to produce *Come Get Maggie*, in addition to Michael's persistence. He does know a good thing when he sees it. Diane Frolov and Susan Justin's play is beautifully written and scored, funny, whimsical and, best of all, it leaves me hopeful. Hope is a precious commodity these days. Maybe love can win.

Enjoy,



John Perrin Flynn,
Producing Artistic Director

Welcome To Rogue Machine Theatre at the storied Matrix Theatre on Melrose.

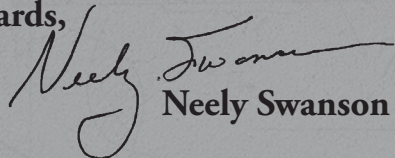
The photos on the wall are from past productions at the Matrix and reveal the historical importance of this great theater. Take a few minutes to walk the halls and see who has performed on this stage in the past. You will be amazed. We hope to add to that history.

Tonight we are proud to present the world premiere of *Come Get Maggie*, our first ever musical. Written by Diane Frolov with music by Susan Justin and Lyrics by Frolov and Justin, this frothy fantasy of a smart woman in a very dumb world will entertain you, make you laugh and hum, and in the end, think. Bringing us back to the good old bad days of the 1950s where everyone knew their place, we meet Maggie, the smart girl, and then woman, who can't possibly fit into a world that excludes people like her. But Maggie doesn't just have a world view, she has a vision of the universe and longs for her "Beam me up Scotty" moment.

We are so happy to welcome director Michael Pressman back to Rogue Machine and extend the red carpet to Diane and her team. Together we will expand our horizons and take you with us.

Now, more than ever, we need your help to continue bringing new and important works to Rogue Machine. Go to our new, revamped website at roguemachine.org and donate. The arts are not a luxury. They are a necessity.

Best regards,



Neely Swanson

Chair, Rogue Machine Theatre Board of Directors

WHO IS WHO: CREATIVE CREW

DIANE FROLOV (*Book and Lyrics*)

Diane Frolov received her MFA in playwriting from UCLA. She became a member of Theatre West in Los Angeles, and then began to write and produce television. She co-wrote NBC's science fiction mini-series *V* and was a writer/producer on Fox's *AlienNation*. Ms. Frolov won Emmy, Golden Globe and Peabody awards for her work on CBS' *Northern Exposure*. She also received an Emmy and a Writers Guild Award for her work on HBO's *The Sopranos*. Ms. Frolov co-created and produced Showtime's *The Chris Isaak Show* and WB's *Easy Money*. She is currently writing a television pilot for Fox Television Studios with her partner, Andrew Schneider.

MICHAEL PRESSMAN (*Director*)

Come Get Maggie marks Michael Pressman's return to LA theater and to Rogue Machine where he last directed *Finks*, a play about the struggle of actors during the McCarthy period of the 1950's. He also directed the acclaimed revival of *Come Back Little Sheba* at the Kirk Douglas Theater for which he won the NAACP award for directing. The *Sheba* production moved to Broadway for a successful run and S. Epatha Merkersen was nominated for a Tony award for her portrayal of Lola. Other theater credits include the West Coast premiere of *To Gillian On Her 37th Birthday* in which he also directed the film version starring Michelle Pfeiffer, Claire Danes, Peter Gallagher, and Kathy Baker. He also directed the award winning play *Days and Nights Within* at the Back Alley Theater. Pressman has moved back and forth from theater and television and films. He has directed numerous TV series, among them *Law and Order: SVU* starring Mariska Hargitay, *Chicago Med*, *Weeds*, *In Treatment*, *Justified*, and others. He is a two time Emmy Winner as producer/director for the TV series *Picket Fences*, which was the beginning of a ten year working relationship with David E. Kelley. They worked together on *Chicago Hope*, and several other series. Among his movie credits are *Boulevard Nights* (recently named to the Library of Congress), *Some Kind of Hero* starring Richard Pryor and a film called *Those Lips Those Eyes*, about Summer Stock starring Frank Langella. *Come Get Maggie* re-unites Michael with Diane Frolov, where they worked together on *Chicago Med*, and with John Flynn, the head of Rogue Machine. It's like bringing a family back together, and that's what Michael loves most about working in Los Angeles theater.

www.Michael-Pressman.com

SUSAN JUSTIN (*Musical Composer and Lyrics*)

Susan Justin studied music at the Royal Conservatory of Music in Copenhagen and earned a BA in music at UCLA. While working at Santa Monica College as Staff Pianist and Vocal Coach for many musicals, she fronted her own band as singer songwriter and played the LA Club Circuit for ten years. Ms. Justin started her film composing career working for Roger Corman, blending New Wave and Sci-Fi in one of the first fully realized electronic film scores. Her work continued with such directors as Andy Davis and Joe Roth and her most recent work in documentaries has been heard on TBS, TNT, LIFETIME, SHOWTIME and PBS. Ms. Justin is also a choral music educator for Santa Monica Malibu USD, whose notable music program is nationally acclaimed.

BROOKE WENDLE (*Choreographer*)

Brooke is a creative producer, stage director and choreographer for multi-cam variety television, scripted television, live concerts, and musical theater. Her work has been seen all over Asia, Europe, the Middle East and across the United States. A few of her credits include *Dancing with The Stars*, *American Idol*, *America's Got Talent*, *World's Got Talent*, Fox's avatar singing competition *Alter Ego*, *The Macy's Thanksgiving Day Parade*, *Orange Is The New Black*, Franco Dragone's *Taboo*, Cirque du Soleil's *Paramour* on Broadway and *Bloody Bloody Andrew Jackson* for which she won a Broadway World Regional Theater award for choreography. Brooke has directed and choreographed global stage shows for Adam Lambert and Condé Nast. She lives in between Los Angeles and New York with her husband and creative partner, Peter, and their miracle embryo, Evyn Reign.

JOHN PERRIN FLYNN (*Producing Artistic Director*)

John is Rogue Machine's founding Artistic Director and he has produced all of our mainstage productions. For RMT, he has directed World Premieres of John Pollono's *Lost Girls* and Henry Murray's *Treefall*; Enda Walsh's *The New Electric Ballroom* and *Penelope*; Samuel D. Hunter's *Pocatello*, *A Permanent Image* and *A Bright New Boise*; *The Sunset Limited*; *Oppenheimer*; and our inaugural production, *Compleat Female Stage Beauty*. John was the Executive Producer and Director of Lifetime's long-running series *Strong Medicine* and has produced two other series and 14 television movies or miniseries including the Emmy-nominated *Burden of Proof*. In 2012, he received the Career Achievement Award for Theatre from the LA Weekly. John is a proud member of the Chickasaw Nation.

ALBIN KONOPKA (*Music Supervision, Arrangements and Incidental Music*)

Albin has enjoyed an international career as a pianist, producer, composer, musical director/supervisor, vocal/dance arranger, and orchestrator. Recently, he was the music director for *A Gentleman's Guide to Love and Murder* for the Jupiter Theatre in Naples, FL, pianist for *King Lear* with Glenda Jackson, pianist for *Wicked*, *Amazing Grace* and *Billy Elliot* on Broadway, associate musical director on the *Gentleman's Guide* and *Anything Goes* national tours, and musical director for Cirque du Soleil's *O*. His musical, *The Gay No More Telethon*, was part of the NYC Fringe Festival and he composed *Ambra* (in Italian) and *She Shtups To Conquer!* Other highlights include producing *Magic in the Mirror* in Korea, *Smart Women*, *Foolish Choices* in Tokyo, two shows for the White House for Ronald Reagan, and touring the globe with Liza Minelli. Besides, English, Albin speaks Italian, Spanish, German, and French.

KRYSTA HIBBARD (*Associate Director*)

Krysta is a director/producer with recent television credits: *Macy's Thanksgiving Day Parade* (NBC), *ANNIE Live!* (NBC), the *Tonys* (Paramount+ & CBS), *Broadway's Back* (CBS), the *Kennedy Center Honors* (CBS), and Dick Clark's *New Year's Rockin' Eve* (ABC). Her theater credits include: *Wanderer* (Paper Mill), *Arrabal* (ART), *Wildflower* (The Apollo), *Acolyte*, *The Seafarer*, *Dark Clothes of Night*, and *Love Letters to a Dictator*. Select film and streaming credits: *Outlier*, *For Hope*, *VIVA Broadway!*, *Esther's Choice*, and *Reddy Records*. Krysta also serves on the board of THEE Productions, a bi-coastal non-profit theatre and film production company. Upcoming projects include: *The Spells or Dude*, *Where's My Cauldron*, and *The Outlier*. www.krystahibbard.com

MICHELLE DO (*Music Director*)

Dr. Michelle Do is an active pianist and musician based in Southern California. She has appeared as a soloist with the La Mirada Symphony Orchestra, Orange County Collegiate Orchestra, the Southern California Philharmonic, and the Indianapolis Philharmonic. Michelle is also a versatile collaborative pianist and music director. She serves as faculty in the Theatre department of Fullerton College, and has music directed productions such as *In the Heights*, *The Hunchback of Notre Dame*, *Les Miserables*, *The Spitfire Grill*, *Mamma Mia!*, *Freaky Friday*, and others, in venues such as the Cupcake Theatre, the Bronwyn Dodson Theatre, and South Coast Repertory.

STEPHANIE KERLEY SCHWARTZ (*Production Design*)

Stephanie Kerley Schwartz is the resident designer for Rogue Machine Theatre, where her designs include the world premiere of *One Night in Miami* by Kemp Powers, among many others. For Center Theatre Group/The Mark Taper Forum she designed costumes for *The Lieutenant of Inishmore*, and Randy Newman's *Harps and Angels*, and the set for *Good Grief* at The Kirk Douglas. Other theatres include; Ford's Theatre in Washington DC *Twelve Angry Men* directed by Sheldon Epps, *A Noise Within Seven Guitars*, *Gem of The Ocean*, *A Raisin in the Sun* all directed by Gregg Daniel, Laguna Playhouse, Artist's Repertory Theatre in Portland Oregon, Pasadena Playhouse, The Geffen Playhouse, South Coast Repertory, East West Players, Boston Court Pasadena, The Fountain, The Skylight, The Matrix Theatre and many others. Recipient of multiple awards and nominations, including the 2017 LADCC/Kinetic Award for Distinguished Achievement in Theatrical Design. www.kerleydesign.com

RIC ZIMMERMAN (*Lighting Design*)

Previous work at Rogue Machine: *Dutch Masters*, *Pocahontas & Penelope*. Other theatrical collaborators include: The Fountain Theatre, Circle X, Theatre of Note, Theatre Forty and many others. International dance work: Lula Washington Dance Theatre, Helios Dance Theatre, LA Contemporary Dance Company, Viver Brasil, Rhapsody in Taps. Television lighting credits include: *The Howard Stern Show* (musical guests), *The Chase*, *Press Your Luck*, ESPN, Al Jazeera. Corporate clients: Microsoft, Disney, Warner Bros., Verizon, Boeing, Google and more. www.litegeist.com

CHRISTOPHER MOSCATIELLO (*Sound Design*)

Christopher is a sound designer, composer and music director, with 2018 LADCC and 2015 Stage Raw Awards, and multiple Ovation nominations for Sound Design. He is a resident designer for Rogue Machine. Theater highlights: The Kennedy Center, Folger Shakespeare Theatre, Antaeus, Odyssey Theatre Ensemble, Rogue Machine, Fountain Theatre, Skylight Theatre, assistant conductor for the national tour of *Phantom of the Opera*. TV highlights: *The Walking Dead*, *Psych*, *Eureka*, *Human Target*, *The Cape*, *Caprica*, *Trauma*. He has scored series, specials and promos for NBC, HBO, BBC, Discovery, National Geographic and others, and he wrote a ballet commissioned by the Kirov Ballet Academy that had its world premiere in Washington, DC.

DANA REBECCA WOODS (*Costume Design*)

Dana is happy to be a member of the *Come Get Maggie* design team. Dana's theater designs include *The Story of Biddy Mason* at UC Irvine; *Miss Maude* for The AD Players at the George Theatre; *The Color Purple* at Sacramento Music Circus; *What I Learned in Paris* at South Coast Repertory; *Intimate Apparel* at Orlando Shakes; *A Medusa Thread*, *In the Red and Brown Water* at UC Santa Barbara; *Tiny Beautiful Things* and *Pipeline* at Ensemble Theater Cincinnati; *The Reclamation of Madison Hemings* at Indiana Repertory Theater; *Blues in the Night* at the Laguna Playhouse; *Shout Sister Shout*, *Fences*, and others for The Pasadena Playhouse. Film & TV design work includes John Sayles' *Go For Sisters*; and the telenovela *Watch Over Me*. Dana has taught at UCF, UCLA, and has been guest speaker at LA Trade Tech College.

NICHOLAS SANTIAGO (*Projection Design*)

Nicholas has worked for numerous universities and theatre companies around Los Angeles including the Pasadena Playhouse (*Ham*), Skylight Theatre (*Forever House*, *Church & State*, *Obama Ology*), Rogue Machine (*A Permanent Image*, *Oppenheimer*, *Honky*), USC (*Trojan Women*, *On the Town*), Theatre Planners (PEMDAS, *The Red Dress L.O.V.E.R.*), the Chance Theatre (*Tribes*, *Middletown*, *Big Fish*), The Road Theatre (*Nowhere on the Border*, *A Delicate Ship*), LA LGBT Center (*The Search for Signs of Intelligent Life Revisited*), and the Fountain Theatre (*Arrival & Departure*, *The Cost of Living*). He recently designed Cesar Millan's new one man show *Unleashed* that opened at the David Copperfield Theatre at the MGM in Las Vegas. He has received numerous award nominations including an Ovation nomination and a LA Drama Critic's Circle award for his work on Rogue Machine's *A Permanent Image* and an Ovation win for his work on The Fountain Theatre's production of *The Cost of Living*. www.nsantiagodesign.com

GLENN MICHAEL BAKER (*Associate Scenic Designer & Properties Designer*)

Glenn is excited to help bring this wild and unique show to life! Recent associate design credits include *Invincible* (Wallis Annenberg Center) and several productions & escape rooms onboard Royal Caribbean ships (under Hariton/Baral Design). Scenic design credits include the Ovation-nominated *Burners* (Moving Arts). Recent prop design credits include *Assassins*, *Mamma Mia!*, *The Great Leap*, *Allegiance*, *Vietgone*, *Next to Normal* (East West Players), as well as *The Legend of Georgia McBride*, *The City of Conversation* (Ensemble Theatre Company). Specializing in model-making, he has also designed large scale models for *Penny Dreadful: City of Angels* (Showtime). Glenn holds a BA in Dance from the University of California, Irvine. Portfolio at www.glennmichaelbaker.com

ANNA AIMEE WHITE (*Associate Choreographer*)

Associate Director/Choreographer: *Blue's Clues & You Live*. Staging Supervisor: *Disney Princess: The Concert*. Choreographer: ABC's *The Goldbergs*, Netflix's *On My Block*, GMT's *Cindy & The Disco Ball*, Actor CoOp's *Miracle on 34th St*. Associate Choreo: Stephen Schwartz's *The Secret Silk* for PCL; *Mamma Mia!* at Bucks County Playhouse; *Joseph* at 3DT, *The Root Beer Bandits* at the GMT. Performer on Broadway: *White Christmas*, *Grease* (original 2007 company). NYC Encores!: *Gentlemen Prefer Blondes*; *Bells Are Ringing*; *No No Nanette*; *Of Thee I Sing*; *Face The Music*. Premiered *Backwards In High Heels: The Ginger Musical* as 'Ginger Rogers'. Anna has performed at The Kennedy Center, The Hollywood Bowl, The Muny, Papermill Playhouse, Garry Marshall's *Happy Days*. Film/TV: *New Year's Eve*; *You Again*; *Valentine's Day*; *Princess Diaries 2*; *Raising Helen*; *Georgia Rule*; *The Goldbergs*; and HBO's *Tracey Ullman Live & Exposed*.

ASHLEY N. MEDINA (*Costume Assistant*)

Ashley is a California based costume creative. She has assisted nationally and internationally at Fantasyland Theatre, Deaf West Theatre, Pasadena Playhouse, and Heiva Tahiti among others. She advocates for humanity's representation through an authentic multicultural perspective in her work. She also takes pride with her work on productions that magically bring fiction to life. New Works: *North, Sanctuary City*. Other Costume Work: *Mickey and the Magical Map, Paint the Night, Main Street Electrical Parade, Mickey's Soundsational Parade, Disneyland's A Christmas Fantasy Parade*. Ashley Nichole is thrilled to join the story telling of this production of *Come Get Maggie*. www.Ashnmcostumes.com

RACHEL ANN MANHEIMER (*Production Stage Manager*)

Having managed everything from original musicals to avant garde happenings, some of Rachel's favorite credits include Tim Crouch's *An Oak Tree*, The American Opera Project's *HAGOROMO*, and *A Midsummer Night's Dream* with the talented seniors at The Professional Performing Arts High School. You may have seen Rachel running around during the Hollywood Fringe Festival at The Broadwater, where they also ran the acclaimed original production of *The Art Couple*, by Emmy winner Brendan Hunt. As a Los Angeles native, Rachel is doubly proud to be 6 shows in with Rogue Machine in the historic Matrix Theatre. Ask them about the ephemeral power of the sense of wonder!

VANESSA HANISH (*Assistant Stage Manager*)

Hanish is a San Fernando Valley based creative who feels blessed to have grown up on the land originally cared for by the Chumash and Gabrielino peoples. They have cultivated a love for working on and creating impactful work that promotes intersectional social justice and equity. Hanish is an emerging director, writer, and performer. This is their third show with Rogue Machine. Credits: *Ex-Merry Wives of Whitehall, My Shot, Emily+John* (Director) *A Great Wilderness, Eight Nights, Little Theatre* (Assistant Director) *Ex-Merry, Importance of Being Earnest, Noises Off, Midsummer Nights Dream* (Actor). In their free time, they enjoy destroying the patriarchy.

TEAK PIEGDON (*Costume Assistant*)

Teak is a 2020 UCSC honors graduate with a major in Theatre Arts and a minor in Film and Digital Media. Previously, she has worked with the Rogue Machine Theatre Company as the Assistant Director for *The Beautiful People*, Assistant Scenic Designer for *On the Other Hand, We're Happy* and as the Assistant Stage Manager for *This Wonderful Life*. She has also stage managed several productions at the Pacific Resident Theatre, including *Albee/Pinter, Andy Warhol's Tomato* (which received the LA Times "Critic's Choice"), and *After the Revolution*.



RAMÓN VALDEZ (*Membership Coordinator*)

Ramón (he/him/his) is a graduate of USC where he received a BA in Theatre and an MS in Project Management. At Rogue Machine, Ramón has stage managed over 20 productions including *Three Views of the Same Object*, *The New Electric Ballroom*, *A Bright New Boise*, *Lost Girls*, *Gruesome Playground Injuries*, *Penelope*, *A Permanent Image*, *Dutch Masters*, and *Les Blancs*. Ramón is also on the board of the Los Angeles Contemporary Dance Company.

MICHELLE HANZELOVA-BIERBAUER (*Graphic Design*)

Michelle is a graphics/projection designer. Most recently she designed for Tim Venable's *The Beautiful People* and Mike Bartlett's *Earthquakes in London* at Rogue Machine (Ovation Nomination). During the pandemic, she has virtually stream managed multiple projects, including the world premiere of *Insulted: Belaru(sia)* by Andrei Kureichik, *The Divorce Comedy* (REDCAT) and a brand new comedy *Bride & Zoom*. She likes dark dusty theatres, her wife Amanda (yes, *that* Amanda), cats and laughing at existential crises.

www.MichelleHanzelova.com

JOE MCCLEAN (*Co-Technical Director*)

After studying Shakespeare in college, nepotism from a construction worker Uncle in NJ delivered the education that would actually keep Joe fed. Over the years, his time swinging a hammer dwindled as he studied at the Royal National Theatre, acted in touring children's theater, wrote and directed two indie features and a dozen shorts, joined the WGA, and started a family... And on occasion, he still opens his toolbox. Keep an eye out in 2023 for *Virai*, written and produced by Joe, starring and directed by Blair Underwood, and also starring Sarah Silverman and Alfre Woodard.

DANE BOWMAN (*Co-Technical Director*)

Dane's love of theater began at the age of 6, watching a production of Shakespeare's *Much Ado*. Soon after, while playing Tiny Tim in *A Christmas Carol*, he was introduced to the joy of being a part of the theater community. In the years since, he's followed his passion across the country, performing in 48 states as well as landing roles in Film & TV and earning his BFA in Performance & Directing from Southern Oregon University. Along the way, he's done a little bit of pretty much everything: carpenter, dry cleaner, bartender... he was even a Lumber Jack for a while! On his happiest days, you'll find Dane at work and play in a theater.

REBECCA LARSEN (*Associate Producer*)

Rebecca is a dynamic multi-hyphenate who is always in search of projects and performances that hold a mirror to the human condition, or as she puts it- "touch the art spot." This June, Rebecca directed *Three Guys, One Groupon* at the 2022 Hollywood Fringe Festival, and premiered her film *Hey, Esther?* at the Dances With Films Festival. She's a powerful collaborator who finds deep satisfaction in delivering material that makes its viewer feel less alone, delighted, and nourished. Rebecca is an unapologetic nerd and an avid lover of puzzles, mathematics, non-fiction, mastering new skill sets, behind-the-camera work, and hyphens.

VICTORIA HOFFMAN (*Casting Director*)

Victoria is the Resident CD at Rogue Machine Theatre. Additional Casting Credits include *For the Love of a Glove* at The Carl Sagan & Ann Druyan Theater; *Kiss of the Spider Woman* at A Noise Within; *How We Got On* for Sacred Fools; *Curious Incident & Herland* for Greenway Court; *Judas Kiss & A Streetcar Named Desire* for Boston Court. Film projects include the AFI Thesis films *Zenaida* and *The Fishmonger*; *Dog Lover* at the DTLA Film Festival (among many), and USC Thesis Film *Falling* (an official selection at the Slamdance Film Festival (among many). Currently Manager of Casting at the AFI Conservatory. Acting credits include *Julius Weezer* for the Troubies, *Sonneteer* at the LA LGBT Ctr, and TV pop ups in *Abbot Elementary* and *The Shrink Next Door*.

www.victoriahoffman.com @VicHoffmanLA

GUILLERMO CIENFUEGOS (*Co-Artistic Director*)

Guillermo Cienfuegos serves as Co-Artistic Director at Rogue Machine, where he has helmed numerous productions, most recently *The Beautiful People*, *Disposable Necessities*, *Ready Steady Yeti Go* and *Dutch Masters*. He also directed the RMT video productions of *Insulted: Belarus(sia)* and *Voices of the New Belarus*. Cienfuegos won both the Ovation and Los Angeles Drama Critics Circle Awards for Best Director for his production of Shakespeare's *Henry V* at PRT. He has directed numerous productions at PRT, including Ionesco's *Rhinoceros*, Pinter's *The Homecoming* and *Safe at Home: An Evening with Orson Bean*. Other theatre directing credits include *Julia*, both at PRT and at New York's 59E59 theatre, Off-Broadway, *Christmas Contigo* at Oregon Cabaret Theatre, and the Los Angeles Premiere of Stephen Adly Guirgis' Pulitzer Prize winner *Between Riverside and Crazy* at The Fountain Theatre. Cienfuegos was featured in the 'People to Watch' issue of American Theatre magazine and is a graduate of the American Conservatory Theatre. Next up: *Much Ado About Nothing* at A Noise Within.

ELINA DE SANTOS (*Co-Artistic Director*)

Elina de Santos is the first woman to receive the LADCC award for Distinguished Achievement in Directing. World premieres: Rogue Machine include Rob Mersola's *Dirty Filthy Love Story*, John Pollono's *Razorback*, and Vince Melocchi's *Nice Things* as well as the American Premiere of *Daytona* by Oliver Cotton, West Coast Premieres: *Bhutan* by Daisy Foote, *Stop Kiss* by Diana Son, *Falling* by Deanna Jent. At Chance Theater, *Sweat* by Lynn Nottage, *Cry It Out* by Molly Smith Metzler, *Seminar* by Theresa Rebeck, at Skylight Theatre *Church & State* by Jason Odell Williams (WP), at Pacific Resident Theatre, *Smart Love* by Brian Letscher (WCP), *All My Sons*, *Orpheus Descending*, (LADCC Awards direction/production), *Rocket to the Moon*, (LADCC Nom), *Death of a Salesman*, (LADCC award), at Deaf West *Romeo & Juliet: Circus Verona*, (Ovation Nom), *Orphans* by Lyle Kessler at International City Theatre (OC Weekly Best Production). Pasadena Playhouse, *Vincent in Brixton*, Berkshire Theatre Festival, *Awake & Sing!*.

WHO IS WHO: CAST



PHILIP CASNOFF (*Ziskin*)

Broadway: Billy Flynn opposite Bebe Neuwirth in *Chicago*, and Blackthorn in the musical *Shogun*. Freddy in *Chess* (Theater World Award, Dir: Trevor Nunn) and starred opposite his wife (Roxanne Hart) in Shaw's *Devil's Disciple* (Circle In The Square). *Grease* (Original Production). Off-Broadway: TFANA - Helicanus in *Pericles* (Dir: Trevor Nunn). NYSF: the lead in Todd Rundgren's *Up Against It* (Drama Desk

nom.). In residence with the Dodgers theater company at BAM and the NYSF. Leading roles in classical, contemporary plays and musicals at Yale, Longwharf, Arena Stage and ACT. TV: A regular on *Strong Medicine* where he directed several episodes, as well as two episodes of *Monk*. Stanislavsky on HBO's *Oz*, Leading roles in several miniseries including *North and South* and the title role in *Sinatra* (Golden Globe nom.). Guest Star on numerous shows including *City on a Hill*, *Homeland*, *One Mississippi*, *Grey's Anatomy*, *CSI*, *Scream Queens* and more recently *All Rise*, and *Manifest*. Film: Several films including *The Post*, and most recently *Rachel Hendrix* (premiering at Santa Barbara film festival). He is a founding member of Rogue Machine Theater Company.



BETH EGAN (*Little Ruthie*)

Beth is thrilled to be back on stage to be a part of the World Premiere of *Come Get Maggie!* She is a graduate of the musical theatre program at DeSales University, home of the Pennsylvania Shakespeare Festival. Regional theatre credits include *Les Miserables*, *Julius Caesar*, *Loves Labours Lost*, and *The Little Mermaid*. She currently studies acting with best selling author and teacher Ivana Chubbuck. This show is for my family who continue to

support my dream through thick and thin (and a pandemic). **IG: beth_egan**



SARAH HINRICHSEN (*Female Swing*)

Sarah is thrilled to be sharing space with the amazing artists of *Come Get Maggie* and Rogue Theatre Machine! She spent the last two years touring the country as Rachel in Jimmy Buffett's *Escape to Margaritaville*, and has performed Off-Broadway, in multiple concerts (*Broadway in Bryant Park*, *Fleet Week*, *Broadway Barks*, *54 below*), and Pre-Broadway workshops. Favorite Regional: Katherine Plummer (*Newsies*), Jo March

(*Little Women*), Gabrielle (*Cinderella*), Belle (*Beauty and the Beast*) and many more. Endless love to this cast and creative team for all the laughs, M+D and Chris for the constant support. **More: @sarahhin and sarahhinrichsen.com**



MELISSA JOBE (*Mrs. Wyberry*)

Melissa is an actress, singer, writer and producer based in Los Angeles. Melissa originated the role of Wallis Simpson in the stage production of *That Woman!* at the 2018 Edinburgh Festival Fringe to rave reviews. Theatre: *The Trials and Tribulations of a Trailer Trash Housewife*, *Cinderella*, *Damn Yankees*, *Fiddler on the Roof*, *Evita*, *The Music Man*, *Hedwig and the Angry Inch*, *The Rocky Horror Show*, *1776*, *How to Succeed in Business*, *Allegro*,

All the King's Men. Film/TV: *Jane the Virgin*, *DARK/Web*, *Forget-Me-Not*, *Real Heroes*, *Cowboy's Girl*, *Pink and Green*, *The Wandmaker*; Voice acting: *Chinook*, *That Woman!*, *Presto Change-o*. Melissa is also a producer and content creator with the talk-show, *Dr. G: Engaging Minds*. www.melissajobe.com



NICOLE LEDOUX (*Kwee*)

Nicole (she/her) is a queer actor, indie filmmaker, and musical comedy writer with a BFA in Acting from Emerson College. She was last seen as Joanne in Coeurage Ensemble's production of *Rent*. Other favorite roles include Whatsername in *American Idiot*, Viola in *Twelfth Night*, and Judy Turner in *A Chorus Line*. In 2022 Nicole completed post-production on the LGBTQ musical comedy pilot that she co-wrote and starred in, *Groovy Tuesdays*. More at www.nicoleledoux.com.



MELANIE NEILAN (*Maggie*)

Melanie is a versatile actress and trained classical ballerina with appearances in Steppenwolf plays and popular TV shows such as *Criminal Minds: Beyond Borders* and *NCIS: LA*. In addition to her acting career, Neilan spent many years as a member of the Makkai Ballet Company and appeared in Stephen Cone's film, *Henry Gamble's Birthday Party*, which won a Silver Hugo award. Offstage, she enjoys playing the piano, composing music, and exploring her passions for

electronics and software engineering. She is also working towards a Math degree and can often be found riding her unicycle in her West Hollywood neighborhood.

“Rogue Machine has had the strongest theater season of any other local company [last year], large or small.”

Los Angeles Times

Did you know...

Multiple Rogue Machine world premieres went on to become films: *One Night in Miami* by Kemp Powers, *Small Engine Repair* by John Pollono, *Lone-Anon* by Neil McGowan



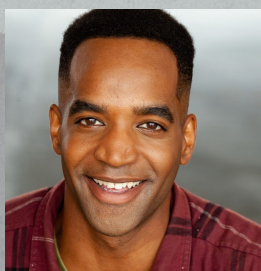
BRUCE NOZICK (*Gen. Winthrop/Mr. Wyberry*)

Bruce is happy to be appearing in his third show with Rogue Machine. Previously with Rogue he appeared in *Finks* (also directed by Michael Pressman) and *Honky*. He began his career in New York after graduating from NYU, appearing at multiple Regional Theatres, Off-Broadway and with the first National Tour of Neil Simon's *Lost in Yonkers*. Since moving to Los Angeles he has appeared in over 100 TV shows and films, including multiple seasons on *Weeds* and *The Last Ship*. He is grateful to have made a living in this crazy industry with the support of his wonderful wife, Terry, and two fantastic sons, Lucas and Will. www.BruceNozick.com



CHASE RAMSEY (*Hugh*)

Chase was last on stage in *The Book of Mormon* musical on Broadway playing Elder Cunningham. Next up he can be seen in Kevin Costner's epic *Horizon Series* (WB), *Falling for Christmas* (Netflix), *Sweet Pecan Summer* (Hallmark), *Yellowstone* (Paramount), *The Storied Life of AJ Fikry*, and a great episode of *Law and Order*. Also known for his work as past food network host as well as a director for the Walt Disney company, The Guthrie Theatre, Berkeley Rep. And four feature films. Chase is a published playwright and produced screenwriter. **Instagram:** [@chaseramseyreally](https://www.instagram.com/chaseramseyreally)



DENNIS RENARD (*Varex*)

Dennis is excited to be making his Rogue Machine debut among such a talented group of artists. Since graduating UCLA's School of Theater, Film, and Television, he's been making a home of the LA theater scene. His recent theater credits include *Choir Boy* with Dezart Performs, *The City of Conversation* at Coachella Valley Repertory, *Apollo 11* at the Rose Bowl, and *12 Angry Men* at the Laguna Playhouse. He performed in the immersive theater shows: *Stranger Things* and *Arcane*. TV/Film credits: *Book of Queer* (Discovery+), *Mississippi Requiem* (Elysium Bandini), *Sinister Minister* (Lifetime). He'd like to thank his family and friends for the undying support, as well as the other artists responsible for making this such a fulfilling experience. **@thedenren**



JACQUELIN LORRAINE SCHOFIELD (*Auntie Ruthie*)
 Jacquelin is a proud Air Force Veteran, who hails from Brooklyn, NY, and is also a very gifted home chef. She is an Ovation and NAACP Theater Award winner, for her performances in *The Color Purple*. After a successful summer run of *In The Heights* (La Mirada Theatre), as the first Afro-Latina to play Abuela Claudia, she is excited to be joining RMT for the world premiere of Diane Frolov's musical, *Come Get Maggie*. Other

Theatre Credits: *The Crucible* (Theatricum); *The Color Purple*, *A Musical* (Greenway); *Sister Act*, *The Musical* (CASA) *Bronco Billy*, *The Musical* (Skylight); *Bad Habits* (Ruskin Group); *How We Got On* (Sacred Fools); *Rapunzel Alone* (The Wallis/24 th Street); *Camille* (Santa Clarita Shakes); and *A Great Wilderness* (Rogue Machine). #IcandoallthingsthroughChrist



ALAN TRINCA (*Male Swing*)

Alan makes his Rogue Machine debut with *Come Get Maggie*. He was last seen off-Broadway in *MSTRAL* at New World Stages in NYC. Previous off-Broadway credits include *Friends the Musical* (Joey), *Love's Labor's Lost* (Navarre), and *90210 the Musical* (Dylan McKay). Alan has been featured as both on-camera and voice talent, most notably for: Dreamworks Animation (*TBA*), MTV (*Rio Shore*), CBS (*Bull*),

and Hasbro/Netflix (*Transformers: Rescue Bots Academy*). He co-runs the production company Good Life Ent, writing and producing short films and developmental series. www.Wearegoodlifeent.com | [@alantrinca](https://twitter.com/alantrinca)



EDDIE VONA (*President/Rodney*)

Eddie is thrilled to be performing with Rogue Machine for the first time! Recent credits include: *Under Milk Wood* and *The Secret in the Wings* (Coeurage Ensemble), *Chisme y Queso* (Center Theater Group), *Girlfriend: The Musical* and *Hand to God* (Dezart Performs), *Darkside* (Garage Theater), *In Love and Warcraft* (Artists at Play, West Coast Premiere), *Little Man* (LA New Court, World Premiere) *50 Shades of Shakespeare* (Hollywood Fringe Festival). He toured with Kaiser Permanente

Educational Theatre from 2015-2020 as a swing, performing 11 roles across 6 shows. He holds a BFA from NYU Tisch. Check out his website: www.eddievonaactor.com. And for something completely different find him on Instagram and TikTok [@sugar.otter.flour](https://www.instagram.com/sugar.otter.flour)

Rogue Machine Donors

Thank You to Our Supporters!

Contributions from January 1, 2018 to January 31, 2022

GRANT & FOUNDATION SUPPORT

- The Ahmanson Foundation
- Attias Family Foundation
- Bialystock & Bloom Theatrical Productions
- Capital Group Companies Charitable Foundation
- The Caplin Foundation
- City of Los Angeles Cultural Affairs Department
- David Lee Foundation
- Henry Murray Fund for New Plays
- Network For Good
- The Joelson Foundation
- Los Angeles County Arts Commission
- Nancy E. Barton Foundation
- The Ralph M. Parsons Foundation
- Richenthal Foundation
- The Rosenthal Family Foundation
- The Shapiro Foundation
- The Shubert Foundation
- U.S. Small Business Association Award
- The Katz Family Fund

INDIVIDUAL DONATIONS

\$5,000+

James Beaver
Adrienne Brandriss
Ann Bronston & John Flynn
Patricia Glaser & Sam Mudie
Anonymous
Michael Pressman & Maia
Danziger
Miki Warner

John & Jennifer Pollono
Lee Ramer
Michael & Stephanie Kerley
Schwartz
Ron and Nanci Slayan
Tucker Smallwood
Neely & Larry Swanson
Harriet Zaretsky

Blaustein
Meg Liberman
Myron Mysel
Penny Orloff
Bob Pinzler
Jack and Sandra Powazer
Stephanie Ramer
Tony Rasmussen
Christopher Curry Root
Whitney Sander &
Catherine Holliss
David Schulman & Ava
Thomas
Michael Schwartz
Oz Scott
Tucker Smallwood
Judith Vida-Spence &
Stuart Spence
Nadya Starr
Mark & Judy Taylor
Arlene Vidor
Walter Weisman
Laura Wernette
Lewin Wertheimer
Willow Cabin Productions
Betsy Zajko & Chris
Monger

\$1,000 - \$4,999

Alley Mills Bean
Arvin Brown
Dan Cole
Victor Cole & Patricia
Green
Jean Craig
Christopher Curry
Patricia Glaser & Sam
Mudie
Larry & Rosa Goldstein
Elina de Santos
Guillermo Cienfuegos
Edward Davis
Paula Holt
Barbara Kallir & Tom
Shima
Perla Karney
Asaad Kelada
Brooke Knapp
James Parriott & Diane
Cary

\$250 - \$999

Rachel Avery
Dylan L. Baquet
Corina Cotsen
Tony Boyd & Jill Wright
Anne Gee Byrd
Margot & Joseph Calabrese
Steve Connell
Chris Craig
Julie Dretzin
Bryan Ellickson
Barry & Julie Engelman
Halley Feiffer
Melody Fernandez
James Freed
Beth Grant
Shelley Grant
Gregg Henry & Lisa James
Amanda Harms
In Memory of John Kallir
Ken Larson & Linda Adams
Jason and Yvonne Lee
Robert Leventer & Jenna

\$100 - \$249

Tony Amendola
Rosalind Avedon
Jordan Baker-Kilner

Steven Bank
Joshua Bitton
Michael J. Belman
Adam Bester
Robert Bordiga
Harriet Borson
K Callan
Mark Bramhall
Donald Broder
Stephen & Hope Burleigh
Jacqueline Cahn
Sharleen Cohen
Patrick Collins
Eben Cook
Samantha Corron
Hannah Cox
Terry Davis
Jed Dannenbaum
Rob Dodd
Elizabeth Desoto
Carol Detrick
Susan Dexter
Bill Forward & Kate
Zentall
Robert Freedman
Gary & Enid Freund
Harry Groener & Dawn
Didawick
Jo Friedman
Olga Garay-English
Pareto Health
Christine Healey
Elizabeth Herron
Richard Hirsch
Dan Hoskins
Tom Jacobson
Janelle Jones
Sylvie Drake Jurras
Marvin Klein
Mitchell Landsberg
Susan Laris
Michael Laskin
Paul & Kitty Lazarus
Paul Linke
Joanne Lipari
Shirley Loeb
Roger Lowenstein
Peter & Marsue MacNicol
Arla Manson
Jennifer McHugh
I. Mecca
Allan Miller & Laura
Zucker

Alicia Millikan
Douglas Morton
Miriam Muscarolas &
Grant Abramson
Madeline Nagel
Anna Nicholas
Lisa Pelikan
Sandra Powazek
Justin Preston
Penny Peyser
Roslyn Rabow
Steven Reuben
Edwin Robinson
The Selbys
Jerry Sroka
Janet Staples-Edwards
Peter Stoughton
Max Trumpower
Elinor Turner
Tyson Turrou
Heather Tyler
Nick & Jenny Ullett
David Warren & Carlos
Van Netter
Alan Watts
Mari Weiss
Alice West
Judith White
Chase Winton
Mark & Susan Yackley

\$20 - \$99

April Alexander
Julie Alter
Tasha Ames
Michael Barr
Patricia Belcher
Bryan Bellomo
Ellen Bergener
Marwa Bernstein
Rick Bernstein
Jan Bevan
David Bickford
Darren Callahan
Arline Chambers
Maurice Chauvet
Patricia Chevalier
Rachel Clentworth
Martha Demson
Daniel Faigin & Karen
Davis
Linda Feldman
Patricia Fenton

Sara Fenton-Vance
Sandra Gooch
Loren Grossman
Doris Haims
Michelle Hanzelova-
Bierbauer
Kymberly Harris
Dennis Hensley
Thomas Jacobson
Emily James
Jessica Kubzansky
Cynthia Kofford
Gary Lamb
Ann Leland
Simon Levy
Nan MacNamara
Michael Mantell
Judith Marlin
Carol Meckler
Pablo Mejlszenkier
Susan Mitchell
Mikey Myers
Phyllis O'Connor
Dino Parks & Julie
Anderson
Jeni Pearsons
Phillipe Perebinosoff
Wendy Philips
Marcia Pryor
Penny Peyser
Bryan Rasmussen
Ava Rose
Jeanne Rosenberg
Molly Schaffer
Dr. Melvin & Sherie
Scheer
Samantha Shaber
Harold Shabo
Susan Siering
Janet Song
Mark St. Amant
Patrick Stafford
Isabel Storey
Ken Tambe
Patricia A. Tierce
James Van Straaten
April Webster
Michele Young
Gary Zacuto
Paul Hoen Zeidler
Ric Zimmerman

Mission Statement

Rogue Machine produces world premieres of new plays, primarily by Los Angeles-based playwrights, and plays new to Los Angeles, including American, West Coast, and Regional premieres of significant contemporary theatrical works. Rogue Machine seeks to be a theatre of ideas and imagination, a theatre which mirrors and examines contemporary culture, a theatre which nurtures contemporary playwrights, and a theatre whose work continually engages the community and creates a dialogue which resonates after the curtain closes.

Rogue Machine also considers building an audience for the future to be an important part of its mission and seeks to attract and serve a younger, more diverse Los Angeles adult audience.

Rogue Machine gratefully acknowledges the contributions made by



DEPARTMENT OF CULTURAL AFFAIRS
City of Los Angeles



THE AHMANSON
FOUNDATION



Theatre
Communications
Group



Special Thanks

Derek Jones, Scott Baier & MPA Lighting, Christopher Stokes & Electronic Theatre Controls, Niki Delone, Jasmine McCaig, Maia Danziger, Douglas Lochner, Jeff Hafler and the Beauty Bubble Salon and Museum, Loyola Marymount University, East West Players, Center Theatre Group, La Vecchia, Melissa Paladino, Tania Verafield, Joe Stern, Ruth Fowler, Amanda Bierbauer

From Susan Justin:

Heartfelt thanks to Allan Holzman for encouraging Diane and I to write this musical and to Chip Sullivan for his original poster art.

From Albin Konopka:

I would like to thank my crew that made me look good Michelle our wonderfully talented music director and all the great pianists that covered rehearsals: Matt Tong, Sean Bart, Andrew Hudson. A special thanks to Marc Macalintal, our sound programmer.



**"A different prompt
word each month
-- and somehow
Rant & Rave artists
never fail to surprise,
amuse & inspire."**



Every Second Monday of the month

Hosted by the hilarious Ron Bottita at Matrix Theatre, RANT & RAVE is a live storytelling series produced by Rogue Machine Theatre, held on the second Monday of every month. There is a new theme each month that is voted on by the audience at the previous RANT & RAVE presentation. Six extraordinary writers share their unique, and often funny, true stories relating to the theme with the audience.

A popular series enjoyed by our patrons, RANT & RAVE is amusing, surprising & inspiring!

**"WRYLY
BRILLIANT"**
- LA WEEKLY

**12 SHOWS ONLY
MUST CLOSE APRIL 1**

**"CLEVERLY CONSTRUCTED,
UPROARIOUS...
AN AUDACIOUS WORK"**
- STAGE AND CINEMA

**"RAW,
IMMENSELY
FUNNY"**
- COMPTON HERALD

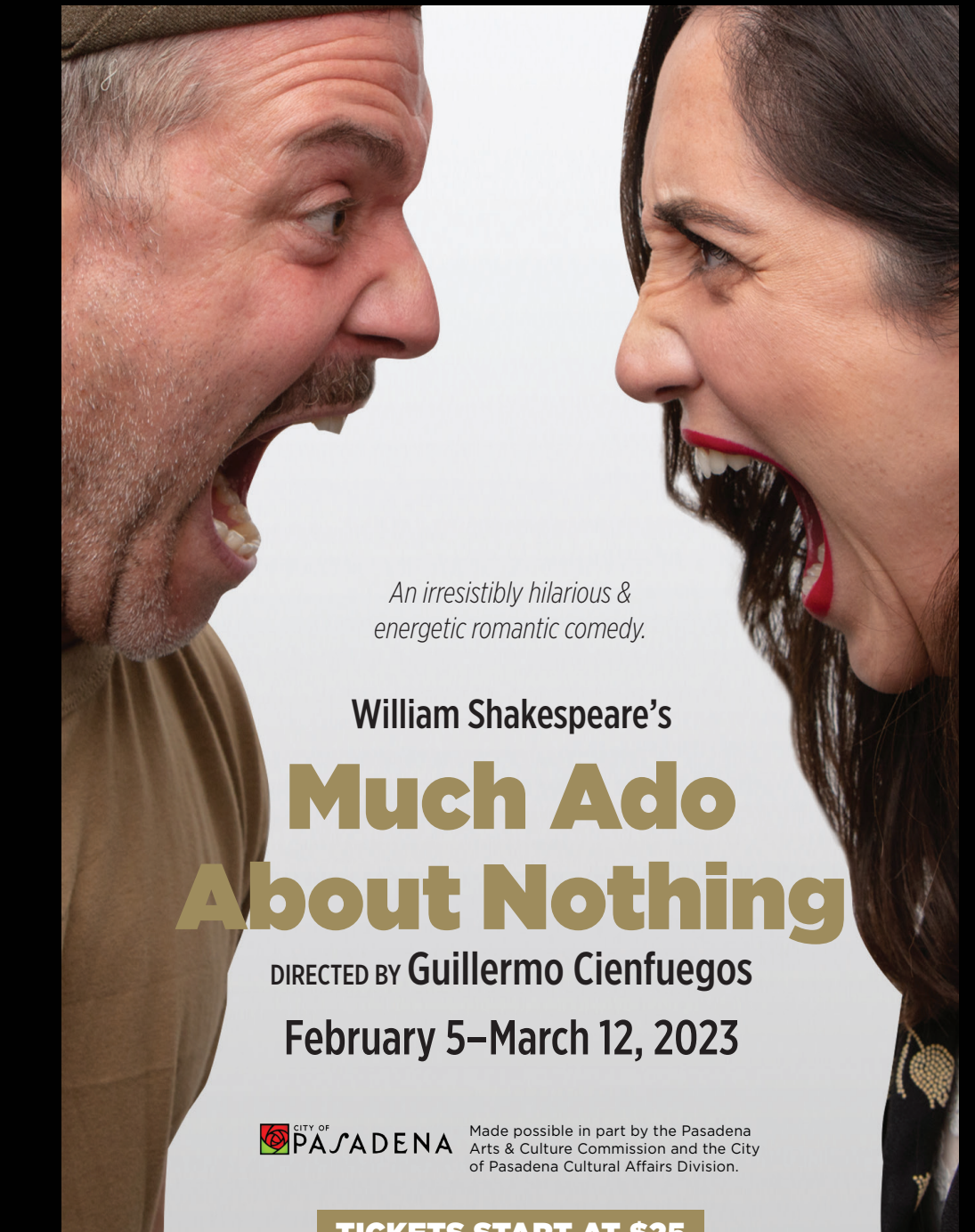
**"RAUNCHY,
SURREAL
AND ABSURD"**
- NPR

For the Love of a Glove

**VERY
AN UNAUTHORIZED MUSICAL
ABOUT THE KING OF POP**



GET 10% OFF
WITH OUR CODE **RMTGLOVE**
FORTHELOVEOFAGLOVE.COM



*An irresistibly hilarious &
energetic romantic comedy.*

William Shakespeare's
**Much Ado
About Nothing**

DIRECTED BY **Guillermo Cienfuegos**

February 5–March 12, 2023



Made possible in part by the Pasadena
Arts & Culture Commission and the City
of Pasadena Cultural Affairs Division.

TICKETS START AT \$25



BEST SEATS AND PRICES AVAILABLE EARLY.
ANOISEWITHIN.ORG | 626.356.3121

FREE PARKING | 3352 E. Foothill Blvd, Pasadena, CA 91107

Erika Soto and Joshua Bitton. Photo by Daniel Reichert.

What This All Cost.

You probably know that almost all theater in this country and, indeed, in the world is not-for-profit. It can be so because it's art and also community service – Theatres are places where we still come together to laugh and think, to be with each other.

Rogue Machine is supported by the State of California, the County of Los Angeles, the City of Los Angeles, some extraordinary foundations such as the Shubert Foundation, the Ralph M. Parsons Foundation, the Ahmanson Foundation, and the David Lee Foundation. We are also supported by some family foundations like the Nancy L. Barton Foundation, The Caplin Foundation and The Rosenthal Family Foundation. This particular production is also supported by Andy Schneider, Michael Pressman, NBC/Universal, 3 Phase Productions, and many others. Our most important support comes from our individual donors. From *you*.

Why do we need all this support?

The simple answer is theatre costs more than it can earn. Another way to say this is just to break even, we'd have to charge more than most people would feel comfortable paying. We are currently scheduled for a 24-performance run. To break even, we'd have to charge \$170 a ticket and sell every ticket in the run at that price. That's more than twice our most expensive ticket for this show. We want to make theatre as affordable as we can. We think theatre should be for everyone. We have at least 4 pay what you can performances of every show with tickets costing as little as \$10.

All the money donated to us goes to making sure what we create can be enjoyed by all. Every year we need to raise 2/3 of our budget from foundations, government agencies and you. If you like what you see here today, please revisit our website, RogueMachineTheatre.org, and donate. Large or small, your donation makes a huge difference. You'll be making sure that Rogue Machine will have the funding to continue bringing you the best in live theater in Los Angeles.



Thank You For Supporting Intimate Theatre In Los Angeles!